



HICSON PUMPS

SELF PRIMING PUMP MODEL : 'AL' HIGH HEAD

DESIGN

Horizontal, lateral channel, self-priming design for continuous operation and handling clear liquid containing air or gas.

CONSTRUCTION

Suction and Delivery branches :
These are vertical and flanges are oval in shape. Counter flanges are provided with BSP thread.

SHAFT SEALING

Pumps are provided with stuffing box packing. Depending upon application mechanical seal can also be provided.

MATERIAL

Suction Cover	Close grained
Delivery Cover	Cast Iron
Intermediate Parts	
Impeller	: H.T. Brass
Shaft	: Stainless Steel
Gland Packing	: Graphited Asbestors

APPLICATION

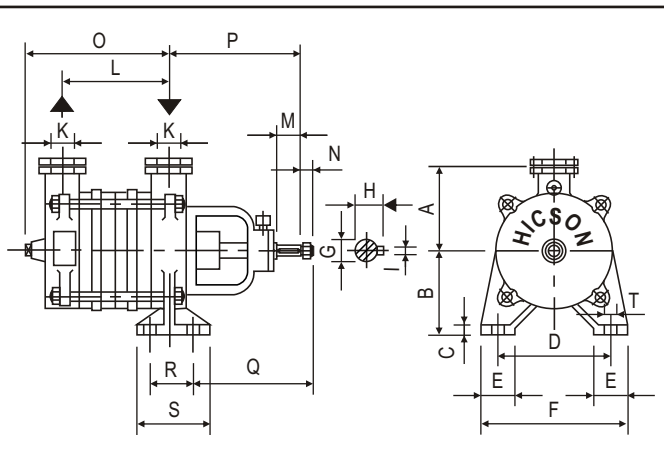
Transfer of Liquid containing air or gas, Boiler feed, Marine, Refrigeration, Fuel Oil etc.

BEARINGS

One grease lubricated ball bearing and one bush bearing flushed by liquid handled.

TECHNICAL DATA

Capacity	: Max. 125 LP.M.
Head	: Max. 150 M.
Speed	: 1450 R.P.M. (Normal) 1800R.P.M. (Max)
Temperature	: Max. 60°C for Standard Pump Max. 80°C for Hot Water Pump (designated by 'H')
Suction Lift	: Max. 8M.
Rotation	: Clockwise when looking from drive end. Anti-clockwise in 'RR' Pumps



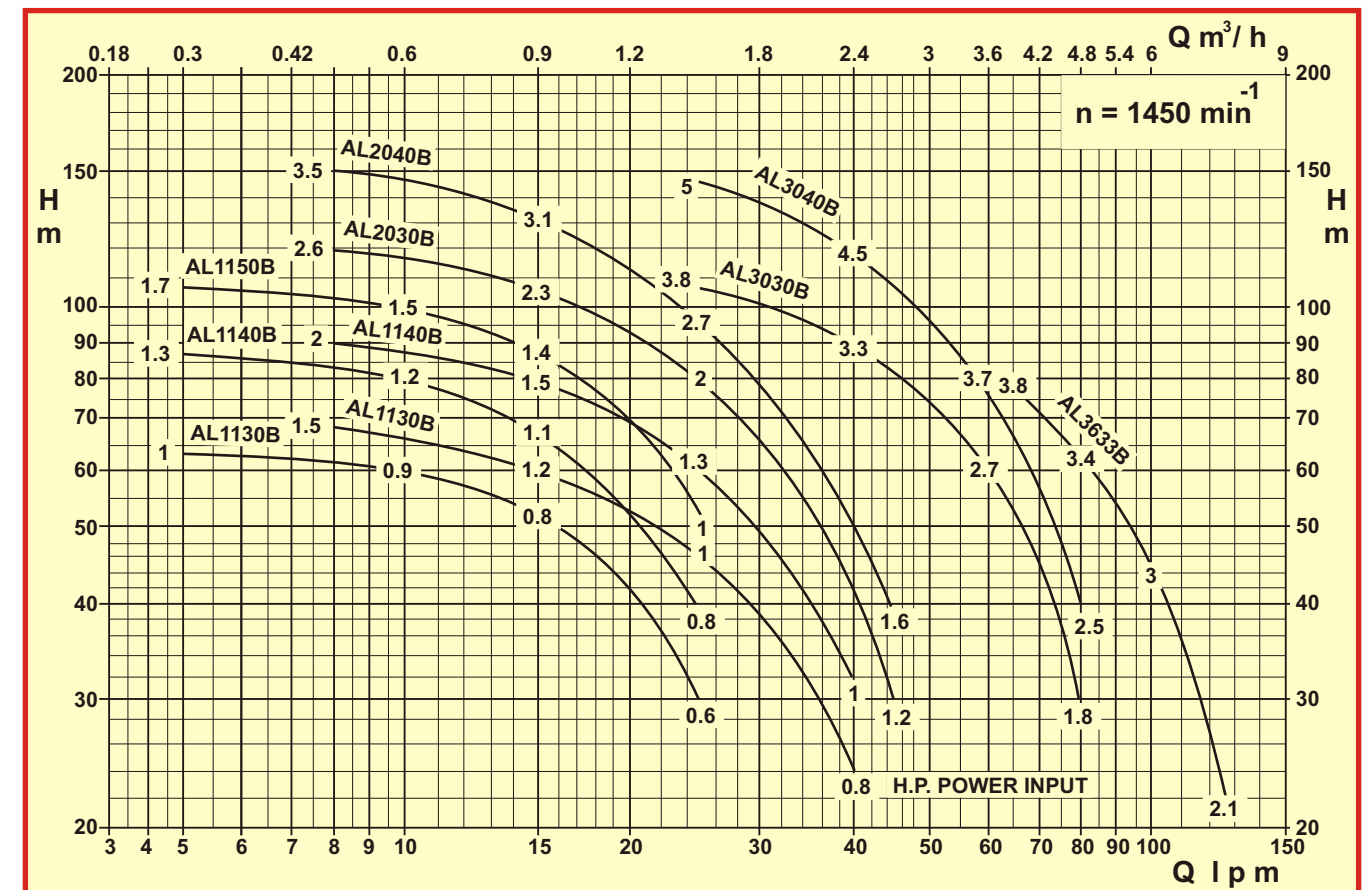
PUMP MODEL	A	B	C	D	E	F	G	H	I	K	L	M	N	O	P	Q	R	S	T	WT. IN KG. Approx.
AL 1130 B	90	90	12	120	36	156	12	15	4	25	146	30	9	186	145	136	50	86	13	12
AL 1140 B	90	90	12	120	36	156	12	15	4	25	180	30	9	220	145	136	50	86	13	15
AL 1150 B	90	90	12	120	36	156	12	15	4	25	214	30	9	254	145	136	50	86	13	20
AL 1030 B	90	90	12	120	36	156	12	15	4	25	146	30	9	186	145	136	50	86	13	15
AL 1040 B	90	90	12	120	36	156	12	15	4	25	180	30	9	220	145	136	50	86	13	18
AL 2030 B	112	112	15	160	36	196	16	18	5	32	163	40	11	220	167	128	70	106	13	25
AL 2040 B	112	112	15	160	36	196	16	18	5	32	203	40	11	260	167	128	70	106	13	27
AL 3030 B	112	112	15	160	36	196	16	18	5	32	163	40	11	220	167	128	70	106	13	21
AL 3040 B	112	112	15	160	36	196	16	18	5	32	203	40	11	260	167	128	70	106	13	25
AL 3633 B	112	112	15	160	36	196	16	18	5	40	163	40	11	220	167	128	70	106	13	21

All dimensions are millimeters unless otherwise stated

Casting dimensions are approximate

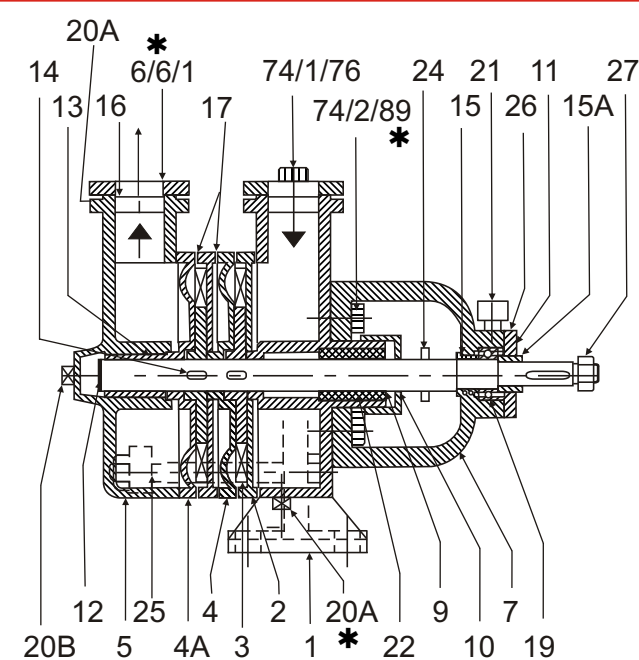
K. G. Industries
KOLKATA - (W.B.)

Phone : 033-2653-1324, 033-2653-3055 ★ Mobile : 09674594256, 07044917347, 09804390932
E-mail : kg.industries.hicson@gmail.com ★ Website : www.hicsonpump.com



DISCHARGE IN L. P. M.

- ★ Performance tolerance is as per IS: 9137 class C.
- ★ Capacity applies to liquid at barometric height of 760 m.m. Mercury and at a temperature of 30°C.
- ★ Power inputs indicated are for specific gravity of 1.0 and viscosity of 1 cSt.
- ★ For Hot water pump 'H' capacity is reduced.
- ★ For Suction lift of more than 4M. Capacity is reduced.



* For Non-Ferrous Pumps

LIST OF PARTS

1 Suction Cover	16 Flange Gasket
2 Intermediate Part II	17 Paper Gasket
*3 Impeller	19 Ball Bearing
4 Intermediate Part I	20A Plug, Gauge
4A Intermediate Part IU	20A* Plug, Drain
5 Delivery Cover	20B Plug, Shaft End
6 Counter Flange	21 Grease Cup
6/1* Counter Flange	22 Packing
7 Bracket	24 Water Slinger
8 Gland	25 Tie Bolt & Nut
10 Gland Nut	26 CS'K Screw
11 Bearing Cover	27 Nut, Shaft End
12 Shaft	74/1 Bolt & Nut
13 Bush Bearing	74/2 Hex, Hd. Screw
14 Key	76 Bolt & Nut
15 Collar Ring (Inner)	89 Stud & Nut
15A Collar Ring (Outer)	

Manufacturer reserves the right to change specification and data for improvement in design.

Authorised Dealer :