

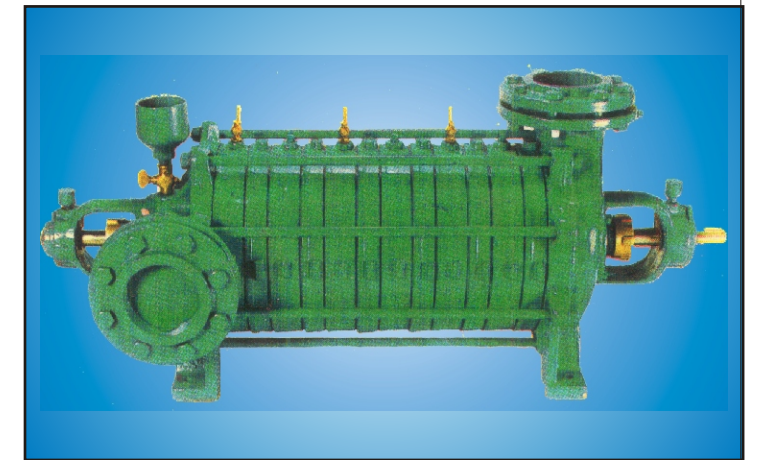


HICSON PUMPS

NON SELF-PRIMING CENTRIFUGAL PUMPS MODEL : 'MH'

APPLICATION

- ★ Industrial ★ Marine
- ★ Refrigeration ★ Fuel Oil
- ★ Fire Fighting ★ Pressure Boosting
- ★ Sprinkler Irrigation
- ★ Mining etc.



DESCRIPTION

Pump type 'MH' are horizontal, non self priming centrifugal pumps. The pumps are built as single stage or multistage pumps up to 10 stages. Suction branch is horizontal and delivery branch is vertical. The intermediate parts are designed to lead the water from the outlet of one impeller to the inlet of the adjacent impeller with minimum of friction resulting in high efficiency of the pumps. The rotor of the pump is supported by antifriction bearings at both ends except for pump series 'MH' 450K in which rotor is supported by antifriction bearing at the drive end and bush bearing at the free end. Antifriction bearings are grease lubricated. Pumps are provided with stuffing box packing. Depending upon the application Mechanical Seal can also be fitted.

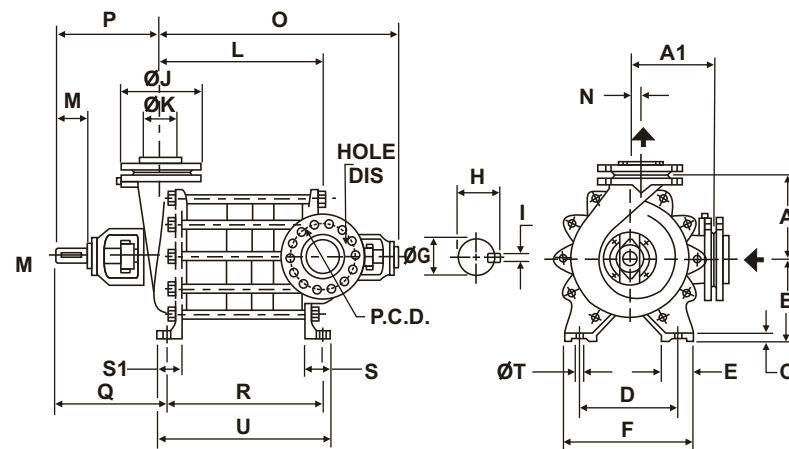
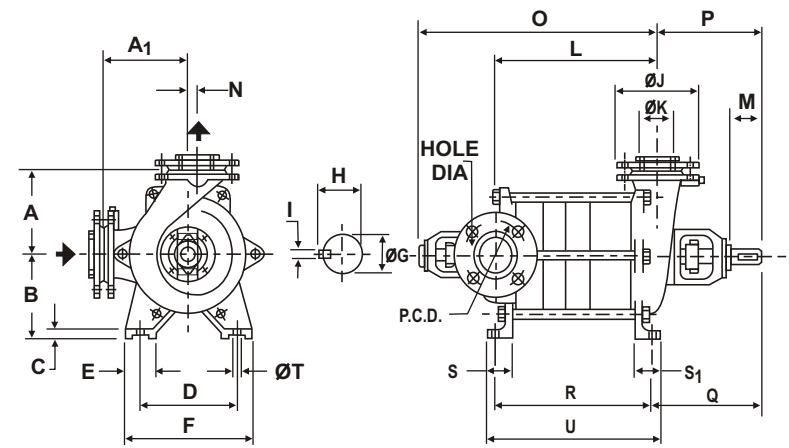
STANDARD MATERIAL OF CONSTRUCTION

Casing - Close grained Cast Iron
Impeller - Close grained Cast Iron
Shaft - Stainless Steel

Special material of construction also available.

- ★ Direction of rotation is clockwise looking from drive end.
- ★ Tolerance on discharge is $\pm 10\%$ at rated head and rated R.P.M.
- ★ Discharge indicated in curves applies to liquid at barometric height of 760 mm mercury and at a temperature of 30° C.
- ★ BMP indicated in curves is for specific gravity of 1.0 and viscosity of 1cSt.
- ★ Maximum permissible speed is 1800 R.P.M. for all pumps except pump series 'MH' 450K for which maximum permissible speed is 3000 R.P.M.
- ★ Before starting the pump it must be filled with liquid to ensure priming.
- ★ Before starting, valve on suction side must be fully opened and valve on delivery side closed

K. G. Industries
KOLKATA - (W.B.)

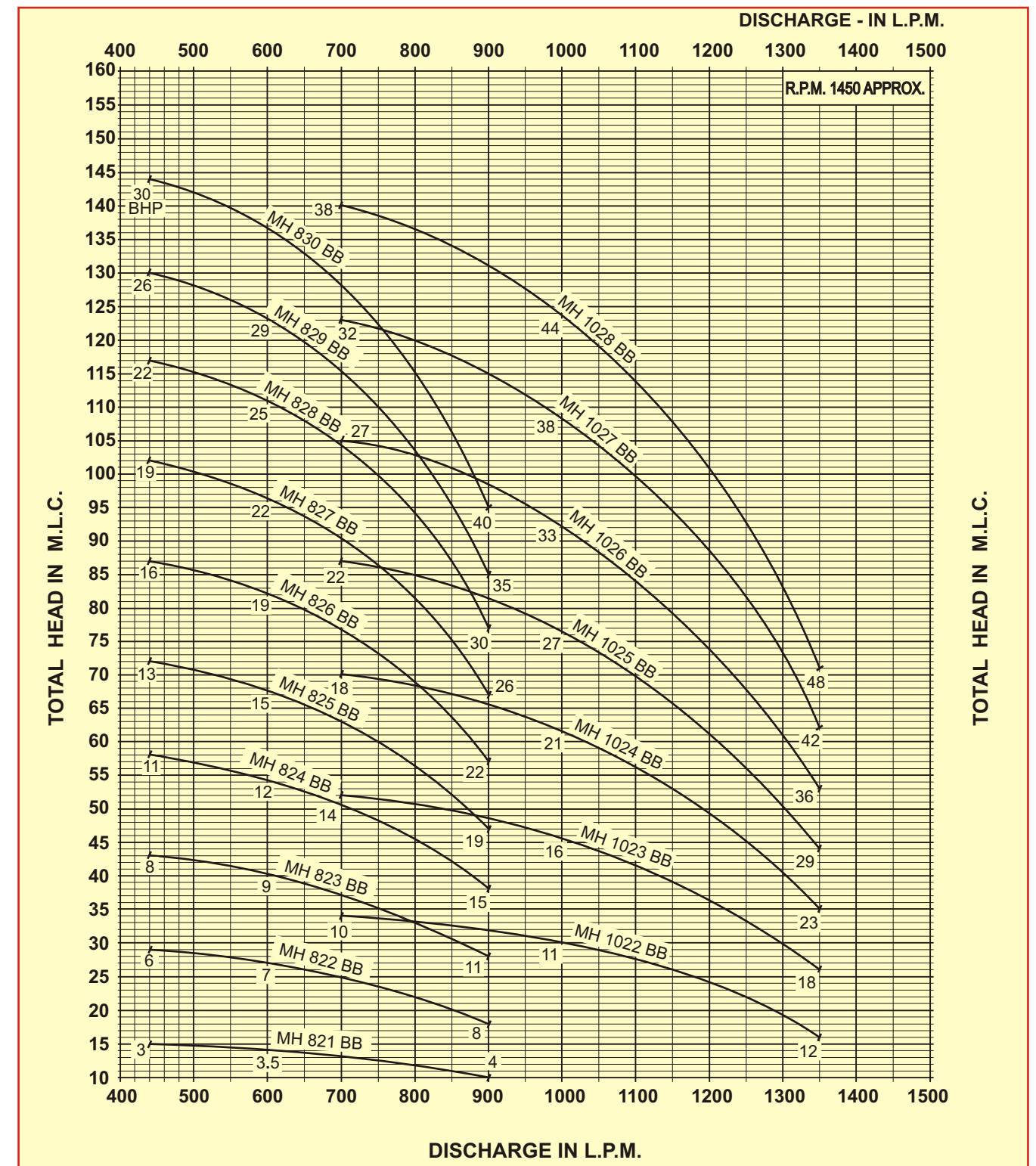


PUMP TYPE	A	A1	B	C	D	E	F	SHAFT DIMMS AT COUPLING			SUCTION AND DELIVERY FLANGE DETAILS				L	M	N	O	P	Q	R	S	S1	T	U	WEIGHT IN KGS. (APPROX)	
								G	H	I	J	K	PCD	No. OF HOLE													HOLE DIA
MH 821 BB	200	220	180	20	200	50	250	26	29	8	200	80	160	4	18	101	56	30	317	280	274	103	65	65	15	146	95
MH 822 BB	200	220	180	20	200	50	250	26	29	8	200	80	160	4	18	181	56	30	397	280	274	183	65	65	15	226	100
MH 823 BB	200	220	180	20	200	50	250	26	29	8	200	80	160	4	18	261	56	30	477	280	274	263	65	65	15	306	110
MH 824 BB	200	220	180	20	200	50	250	26	29	8	200	80	160	4	18	341	56	30	557	280	274	343	65	65	15	386	130
MH 825 BB	200	220	180	20	200	50	250	26	29	8	200	80	160	4	18	421	56	30	637	280	274	423	65	65	15	466	150
MH 826 BB	200	220	180	20	200	50	250	26	29	8	200	80	160	4	18	501	56	30	717	280	274	503	65	65	15	546	175
MH 827 BB	200	220	180	20	200	50	250	26	29	8	200	80	160	4	18	581	56	30	797	280	274	583	65	65	15	626	200
MH 828 BB	200	220	180	20	200	50	250	26	29	8	200	80	160	4	18	661	56	30	877	280	274	663	65	65	15	706	230
MH 829 BB	200	220	180	20	200	50	250	26	29	8	200	80	160	4	18	741	56	30	957	280	274	743	65	65	15	786	260
MH 830 BB	200	220	180	20	200	50	250	26	29	8	200	80	160	4	18	821	56	30	1037	280	274	823	65	65	15	866	300
MH 1022 BB	220	225	214	18	270	70	340	26	29	8	220	100	180	8	18	194	56	40	431	277	273	187	70	65	15	234	125
MH 1023 BB	220	225	214	18	270	70	340	26	29	8	220	100	180	8	18	279	56	40	516	277	273	272	70	65	15	319	145
MH 1024 BB	220	225	214	18	270	70	340	26	29	8	220	100	180	8	18	364	56	40	601	277	273	357	70	65	15	404	165
MH 1025 BB	220	225	214	18	270	70	340	26	29	8	220	100	180	8	18	449	56	40	686	277	273	442	70	65	15	489	185
MH 1026 BB	220	225	214	18	270	70	340	26	29	8	220	100	180	8	18	534	56	40	771	277	273	527	70	65	15	574	205
MH 1027 BB	220	225	214	18	270	70	340	26	29	8	220	100	180	8	18	619	56	40	856	277	273	612	70	65	15	659	225
MH 1028 BB	220	225	214	18	270	70	340	26	29	8	220	100	180	8	18	704	56	40	941	277	273	697	70	65	15	744	260

Authorised Dealer :

HICSON PUMPS

PERFORMANCE TABLE - 'MH' SERIES



K. G. Industries
KOLKATA - (W.B.)